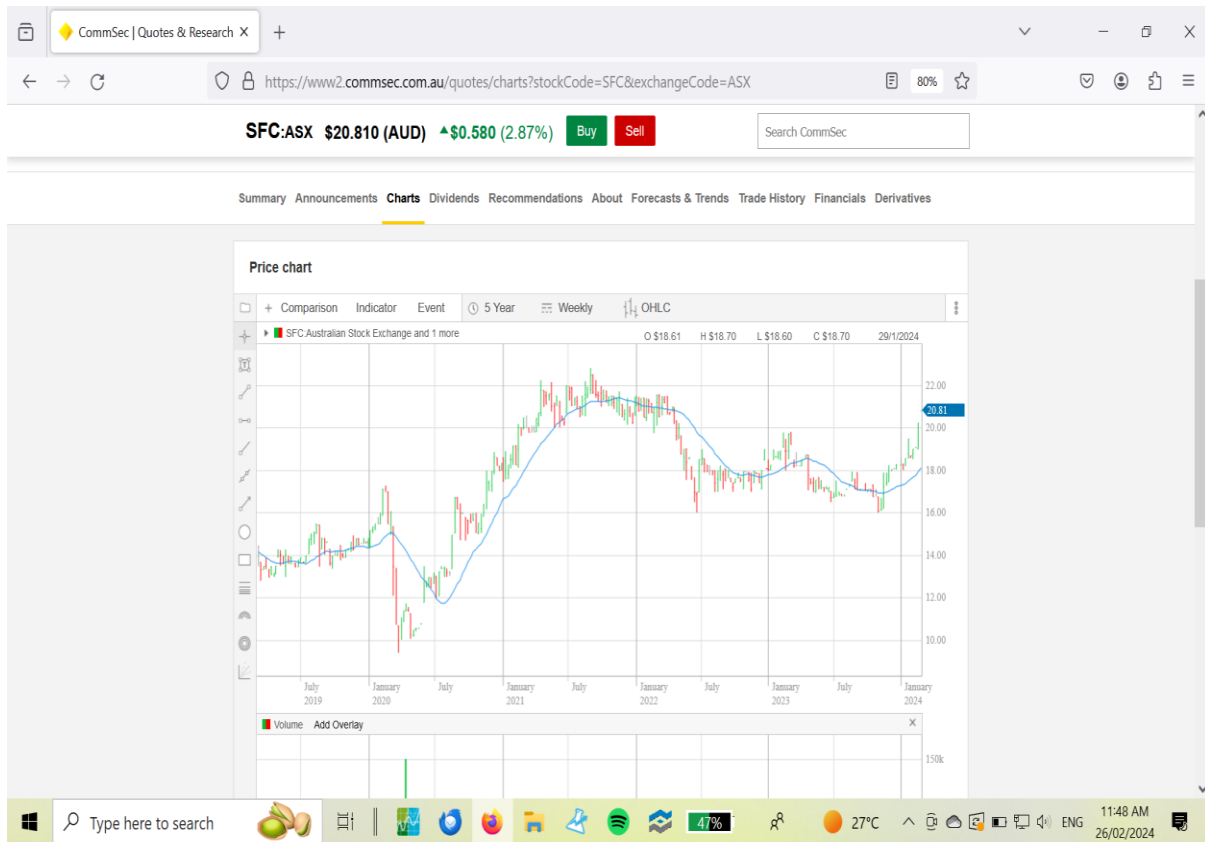
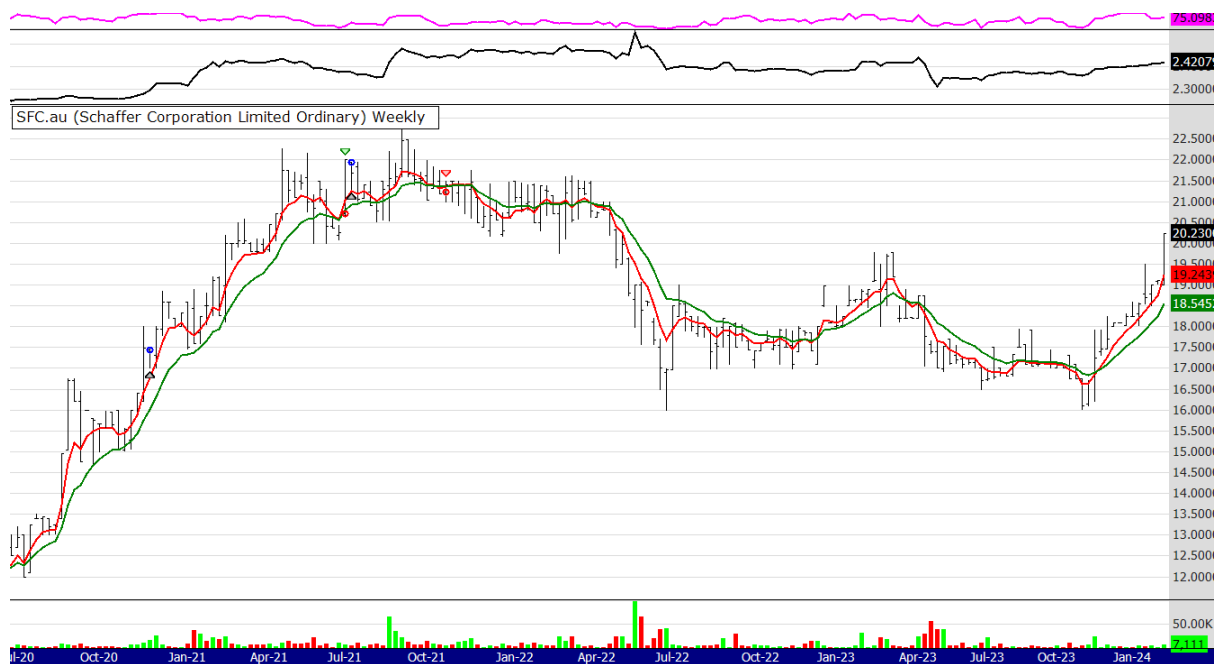


It appears the problem is data - look at the charts below of SFC

See the chart of SFC provided by Commonwealth Bank of Australia

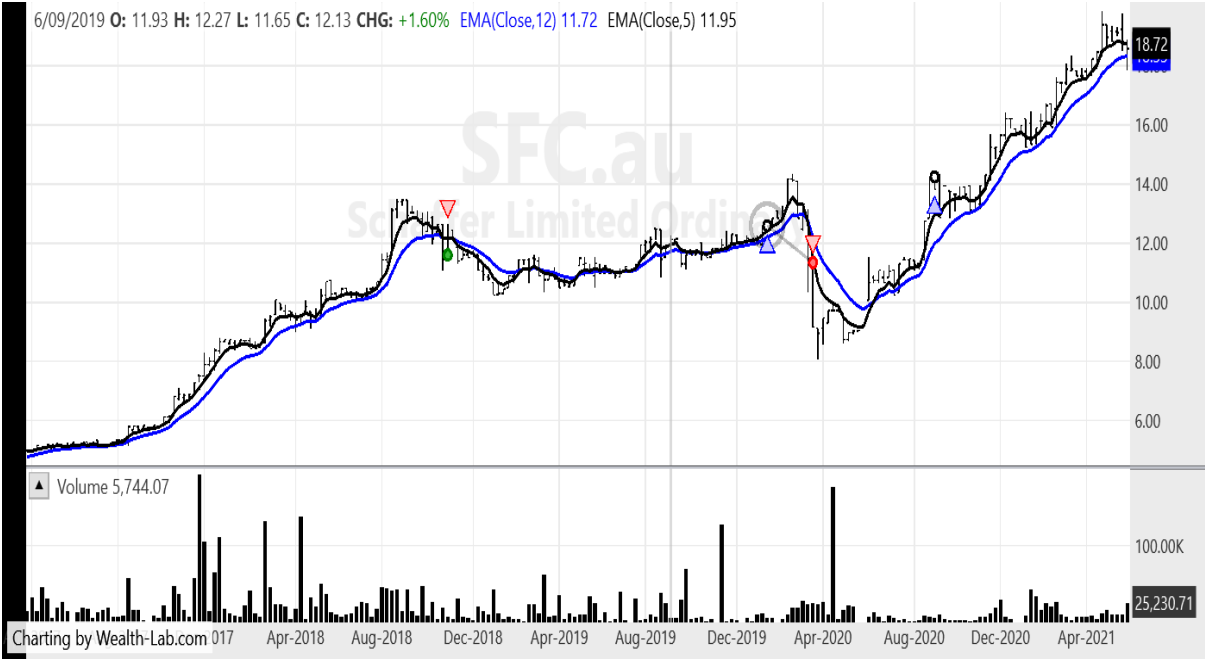


See the WL6 chart which is the same



Now see the WL8 chart below which is wildly different

6/09/2019 O: 11.93 H: 12.27 L: 11.65 C: 12.13 CHG: +1.60% EMA(Close,12) 11.72 EMA(Close,5) 11.95



Charting by Wealth-Lab.com